



(1281-1566)  
 A (1800-1923)  
 A (1850-1900)  
 A (1890-1980)  
 A 19 20

**HOW IS THE COURSE STRUCTURED?**

A 1 (10),  
 2  
 3.  
 2,  
 3.

1 ( ) (

**IB1**

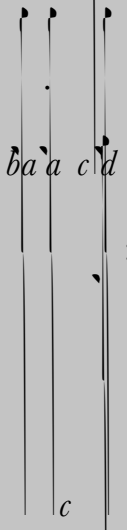
1,  
 ( ) -0.3 ( ) 0.3 ( ) 0.5 ( ) -0.1 ( ) -0.5 ( ) 10 ( ) -0.5 ( ) -0.5 ( ) -0.3 ( )  
 ( ) -145 ( ) -0.5 ( ) 0.5 ( ) 0.5 ( ) -0.3 ( ) 0.5 ( ) -0.5 ( ) 15 ( ) -0.3 ( ) -0.5 ( ) -

’ . A , ’

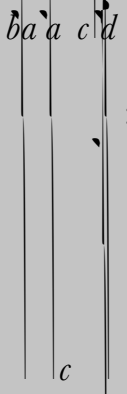
- 50% ( - - - )

**ARE THERE ANY REQUIREMENTS?**

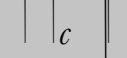
1.



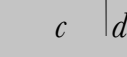
2.



3.



4.



:

A

(

).

,

?

?

?

,

,

.

1.

1921?

2.

1914?

3.

1980 ?

### **CAN AN INTEREST IN HISTORY LEAD TO A CAS PROJECT?**

1. A

2. A

3. A

### **WHAT IS THE RELATIONSHIP BETWEEN HISTORY AND TOK?**

## WHERE CAN I FIND OUT MORE INFORMATION?

[@](#)

### Recommended reading list for Paper 1 (SL/HL)

- 
- :

### Recommended reading list for Paper 3 (HL only)

- : , 1914-1920